

# Available for Sublease

## North Fulton Office Space in Parkside Terrace



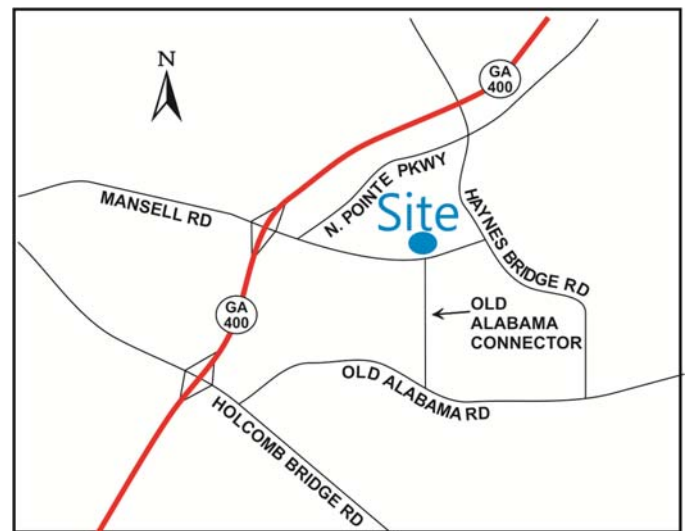
### 3820 Mansell Road, Alpharetta, GA 30022

**Rate:** *\$15.00 SF*

**Size:** *9,140 SF*

**Term:** *Through June 30, 2018*

- Class "A" Office Space With Elevator Lobby Exposure
- Highly Upgraded Partitioned/Open Plan
- Furniture Potentially Available
- Ideal Corporate Office Location
- Close Proximity to GA 400 and Northpoint Mall
- Property Located on the Alpharetta Greenway
- Brokers Protected



**Ted Schwartz**

404.869.2606

ted@joelandgranot.com

For complete details, please visit: [www.joelandgranot.com](http://www.joelandgranot.com)



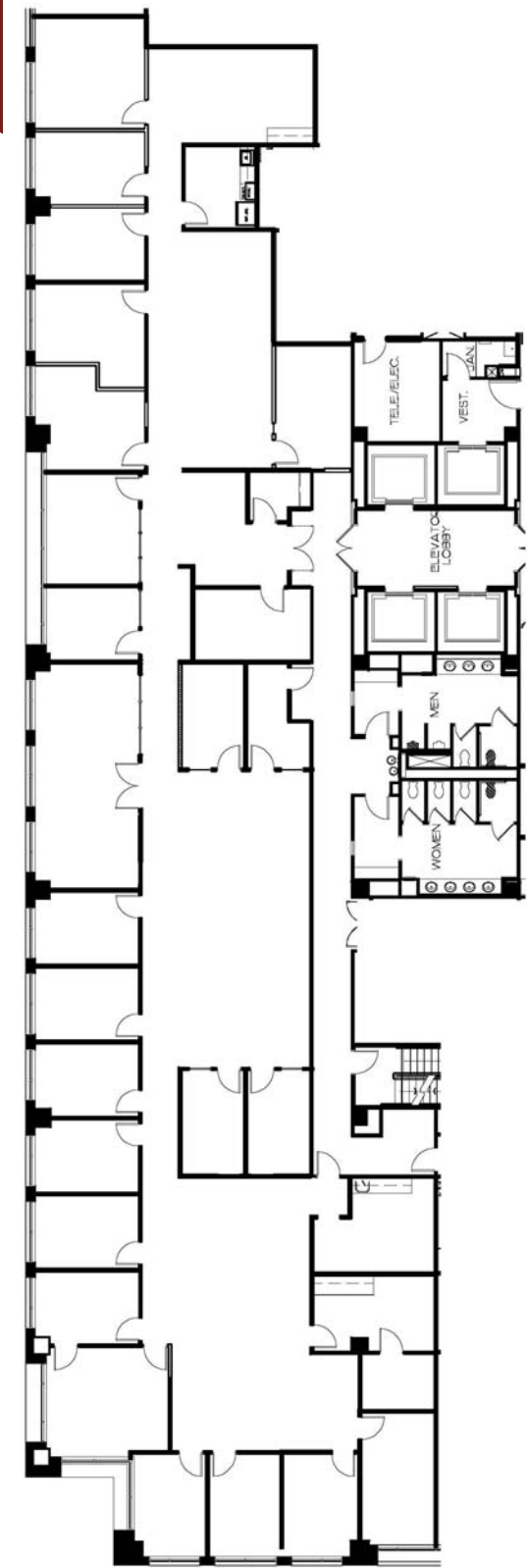
**JOEL & GRANOT**

COMMERCIAL REAL ESTATE

962 Howell Mill Road, Atlanta, GA 30318  
(ph) 404.869.2600 | (fax) 404.869.2601

The information was obtained from sources we assume are reliable. We do not doubt its accuracy, however we do not guarantee it. No liability is assumed for errors and omissions. Information is subject to changes and withdrawal without notice.

# Parkside Terrace Floor Plan



962 Howell Mill Road, Atlanta, GA 30318  
(ph) 404.869.2600 | (fax) 404.869.2601

The information was obtained from sources we assume are reliable. We do not doubt its accuracy, however we do not guarantee it. No liability is assumed for errors and omissions. Information is subject to changes and withdrawal without notice.